



YOSHIMURA

RESEARCH&DEVELOPMENT OF AMERICA, INC.

5420 DANIELS STREET STE A, CHINO CA. 91710 · (800)634-9166 · (909)628-4722 · FACSIMILE (909)591-2198

www.yoshimura-rd.com

OFF-ROAD PERFORMANCE EXHAUST SYSTEM

**Can-Am
2011-2012
Commander 1000**

SPARK ARRESTED

390502G501 STAINLESS STEEL SLIP-ON SYSTEM WITH RS8 STAINLESS SLEEVE



**THIS PRODUCT IS DESIGNED FOR USE IN CLOSED COURSE
RACING AND IS NOT INTENDED FOR ANY OTHER USE.**



NOTE: IN THE STATE OF CALIFORNIA, IT IS ILLEGAL TO MODIFY THE EMISSION CONTROL SYSTEM, WHICH INCLUDES THE FUEL INJECTION OF ANY VEHICLE.

Caution: Exhaust system can be extremely hot. Let vehicle cool down before beginning installation. Always wear hand and eye protection and take precautionary measures to avoid injury.

Note: Read through all instructions before beginning installation.

Tools Needed:

Metric Socket Set
Ratchet Wrench and Extension
Spring Puller Tool

Installation Steps:

1. Stock exhaust removal.

- Remove rear exhaust cover panel by removing 4 bolts (2 above and 2 below) as indicated in Figure 1.
- Remove stock exhaust springs securing muffler to tailpipe as indicated in Figure 1.

Note: Keep stock exhaust springs as some will be used with the Yoshimura exhaust system. Keep stock exhaust gaskets as they will also be reused. If damaged, please acquire new gaskets from your local Can-Am dealer.

- Remove two bolts mounting muffler to frame and remove stock muffler assembly.

Note: There are two pins underneath the muffler holding the muffler in place also via two rubber grommets. Please remove these grommets upon removal of the stock exhaust as they will not be used with the Yoshimura exhaust system.

2. Yoshimura exhaust installation.

- Install Yoshimura muffler assembly using stock exhaust gasket and supplied hardware as indicated on parts diagram page. Note order of hardware as follows: bolt, frame mount, washer, grommet and spacer, muffler bracket, grommet, washer, nut.

Torque bolts to 16.5 ft-lbs (23.0 N-m).

- Before starting vehicle, check for proper clearance between new exhaust system and rear suspension (i.e. tire, suspension, brake, etc). If any problem is found, please carefully follow through the installation steps again. If problem still persists, please call Yoshimura Tech Department at (800) 634-9166 / in CA (909) 628-4722.

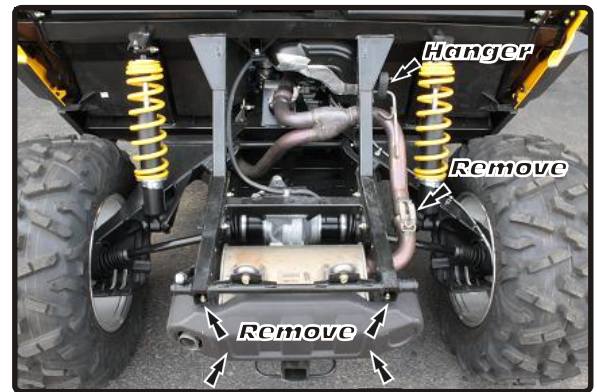


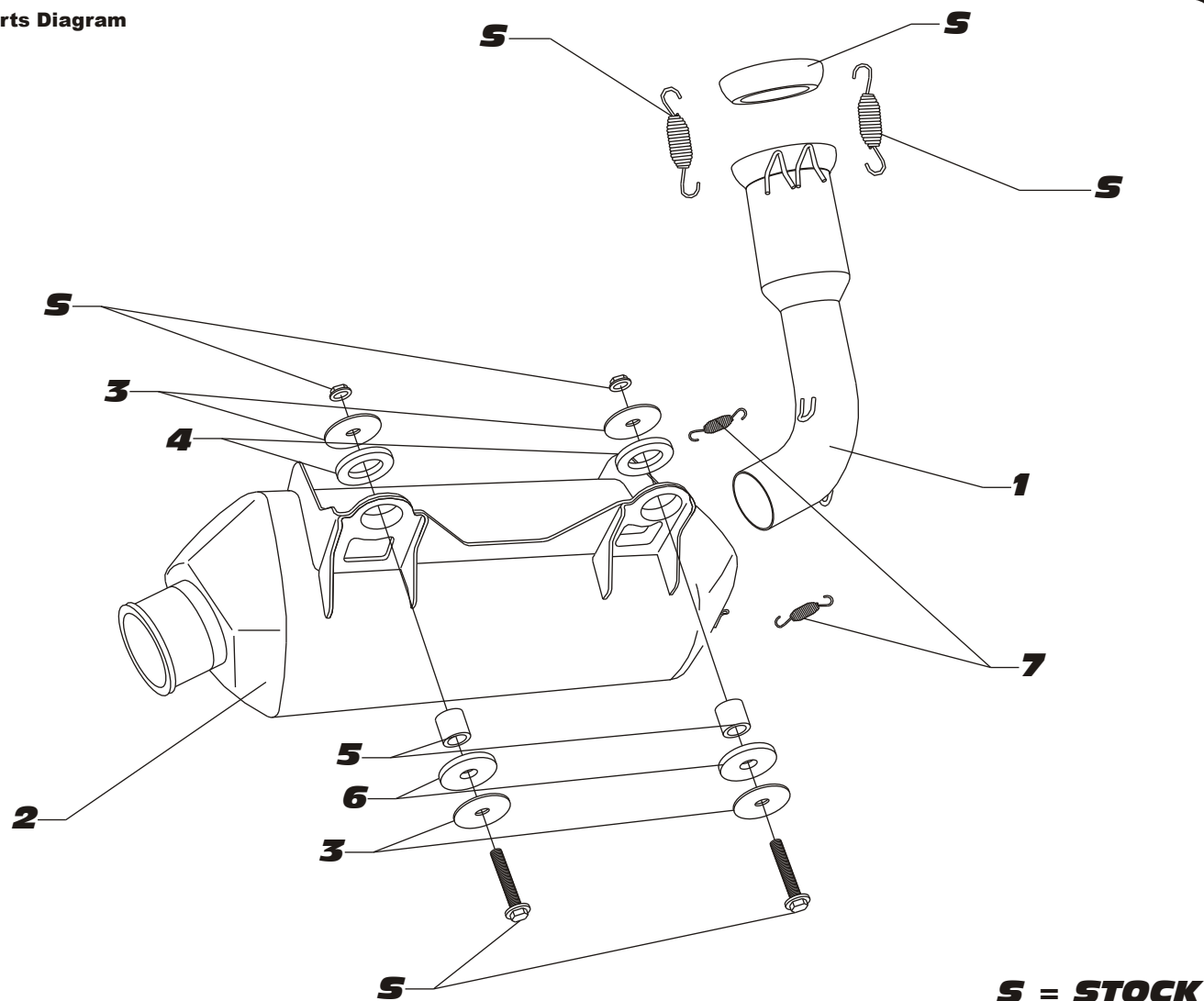
Fig. 1

It is recommended that the muffler and tailpipe be wiped down with rubbing alcohol to remove oil and fingerprints. This will help prevent tarnishing of the finish after the exhaust is heated up.

NOTE: After starting vehicle, it is normal for new exhaust system and muffler to emit smoke until oil residue burns off.

#390502G501

Parts Diagram



S = STOCK

| NO. | DESCRIPTION | QTY | PART # |
|-----|----------------------------|-----|----------------|
| 1 | Yoshimura Tailpipe | 1 | 39050-152 |
| 2 | Yoshimura Muffler Assembly | 1 | 390504G500-RMA |
| 3 | 8mm x 38mm Flat Washer | 4 | 8X38WSH |
| 4 | Rubber Grommet | 2 | Z1030 |
| 5 | Grommet Spacer | 2 | Z1031-SP |
| 6 | Rubber Grommet | 2 | Z1031 |
| 7 | Medium Exhaust Spring | 2 | RACE-SPS-1 |
| ** | Offroad Endcap Plug | 1 | 347PLUG |
| ** | Spring Puller | 1 | ST-200 |
| ** | O2 Bung Plug | 1 | M18X13PLG |
| ** | Yoshimura Vinyl Sticker | 1 | 17029 |

Optional Replacement Parts:

| DESCRIPTION | PART # |
|--------------------------------|-----------------|
| Muffler Repack Kit | REPACK-RS8T-P22 |
| Spark Arrestor Replacement Kit | SA-09-K |

Fuel Injection Mapping:

For best results and to extract the most performance out of the Yoshimura system, fuel injection mapping is recommended using the Yoshimura PIM2 for closed course competition use only.

Mapping and further information will be available on the Yoshimura website at: www.yoshimura-rd.com

Note: It is illegal to modify the fuel injection system of any vehicle in the state of California.



YOSHIMURA

RESEARCH&DEVELOPMENT OF AMERICA, INC.

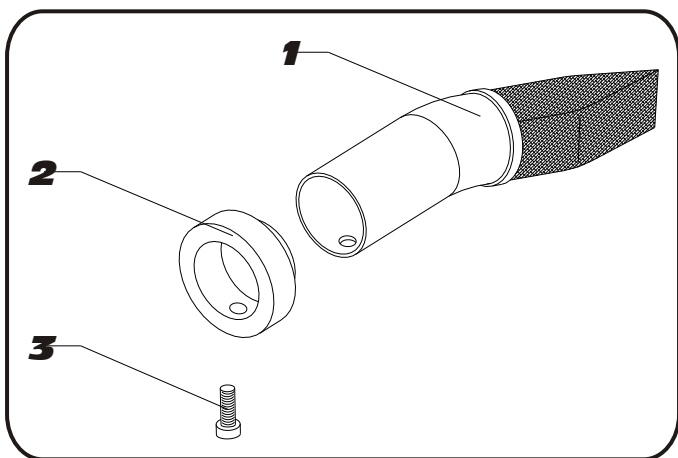
5420 DANIELS STREET STE A, CHINO CA. 91710 · (800)634-9166 · (909)628-4722 · FACSIMILE (909)591-2198

www.yoshimura-rd.com

Spark Arrester Cleaning Information

Caution: *Muffler can be extremely hot. Let muffler cool down before removing spark arrester.*

Note: *Read through all instructions before beginning disassembly.*



Parts Diagram

Tools Needed: 4mm Allen Key
Wire Brush
Pair of Gloves
Safety Glasses

| NO. | DESCRIPTION | QTY | PART # |
|-----|---------------------------------|-----|----------------|
| 1 | 6mmX14mm Button Head Cap Screw | 1 | M6X14BHS |
| 2 | RS8 Spark Arrestor Ring, 1.500" | 1 | RS8T-RING-1500 |
| 3 | Spark Arrestor; TEC-SD16 | 1 | TEC-SD16-00 |

Cleaning Steps:

- 1 Using a 4mm Allen key, remove the 6mm x 14mm Button Head Bolt located under the muffler exhaust tip. (See Parts Diagram for location)
- 2 Remove the spark arrester from the muffler.
- 3 Using a wire brush, remove carbon deposits from spark arrester screen. Inspect the screen for excessive wear or damage. If spark arrester is excessively worn or damaged, the spark arrester must be replaced.

CAUTION: Gloves and Safety Glasses should be worn while cleaning spark arrester.

- 4 Re-install spark arrester and 6mm x 10mm bolt into muffler assembly. Torque bolt to 1.0 kg-m (7.3 lb-ft).

NOTE: It is highly recommended that a low strength thread lock is used on the bolt.

✱ CAUTION: To maintain maximum sound and engine performance the muffler packing may need to be replaced every 1,000 miles. Failure to maintain the muffler packing may cause damage to the muffler and/or void the warranty. Regularly inspect the muffler and spark arrester for discoloration, cracks, or other signs of wear or damage caused by depleted muffler packing. If muffler packing is determined to be depleted or worn, a muffler repack kit is highly recommended to restore the muffler to optimum performance. Spark arrester inspection and muffler repack should be performed at same time. ✱